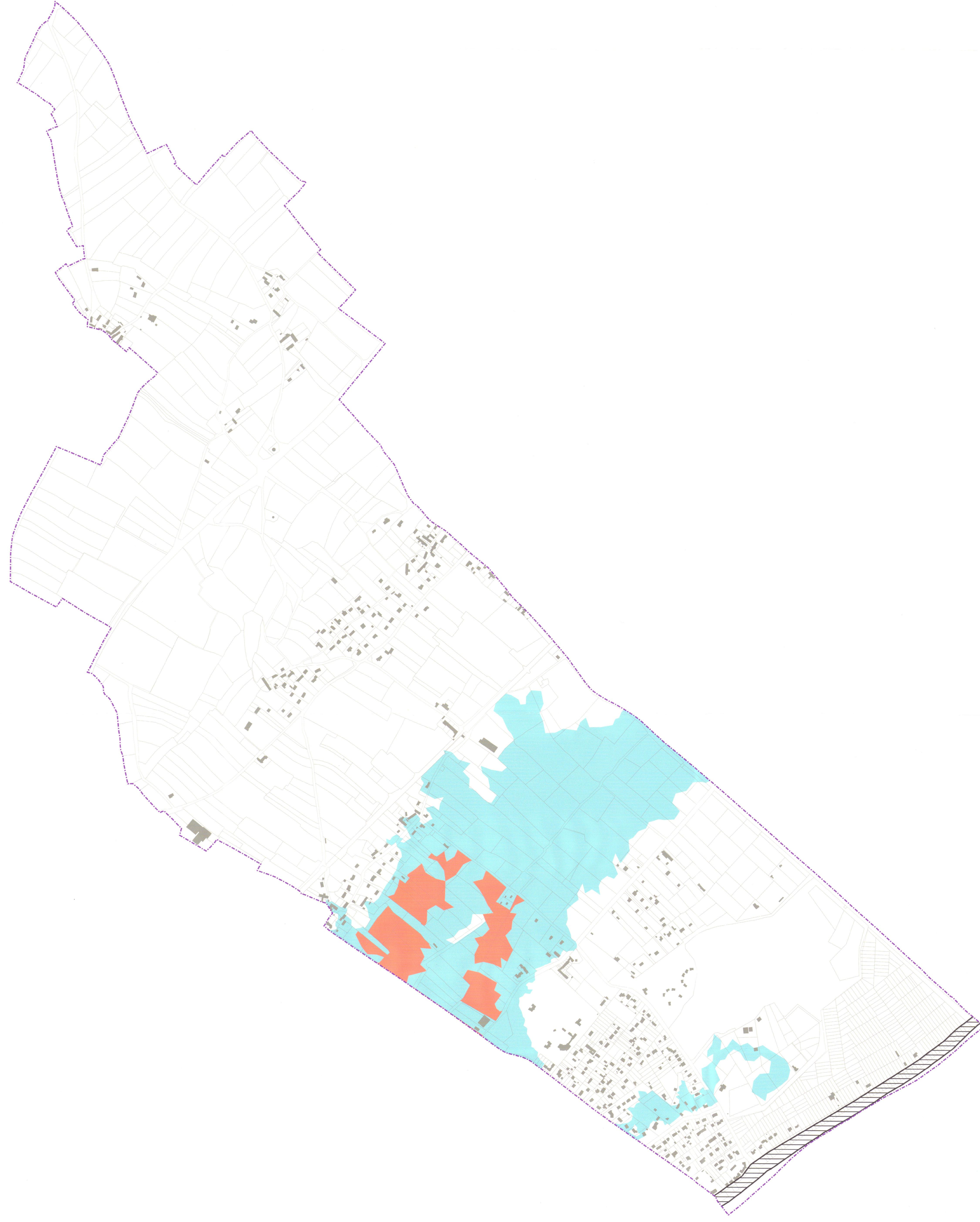











Echelle : 1/5 000

PPRL Manche - Zonage réglementaire Commune de Saint-Jean-de-la-Rivière




Damien POIVE-MONTASSON
22 DEC. 2015

-  Constructible avec prescriptions B1
-  Non constructible R1
-  Non constructible R2
-  Zone de précaution R3
-  Zone soumise aux chocs mécaniques R3
-  Zone soumise à l'axe érosion R3
-  Limite communale
-  Limite de parcelle
-  Bâtiment